

FOR LEASE

3614 PACIFIC COAST HIGHWAY – TORRANCE, CA

4,660± SF NEW BUILDING UNDER CONSTRUCTION

- ❖ Ideal for Retail, Medical or Office Use
- ❖ Elevator Serviced
- ❖ Signalized Corner
- ❖ High Visibility, High Traffic Count
- ❖ Across from Best Buy, Office Max, STBX, Panda Express, Medical Buildings
- ❖ Close to Torrance Memorial Hospital
- ❖ Walking distance to many dealerships: Toyota, Lexus, Mercedes Benz, Porsche, Jaguar, Audi, Ford, Acura, etc.
- ❖ 24 Parking Stalls



NAI Capital

Commercial Real Estate Services, Worldwide.
970 W. 190th Street • Suite 100 • Torrance, CA 90502 • Fax: 310.327.6257
www.naicapital.com Broker ID #00806840

Sheri Messerlian
310.532.9080 ext 224
smesserlian@naicapital.com
DRE License # 00450571

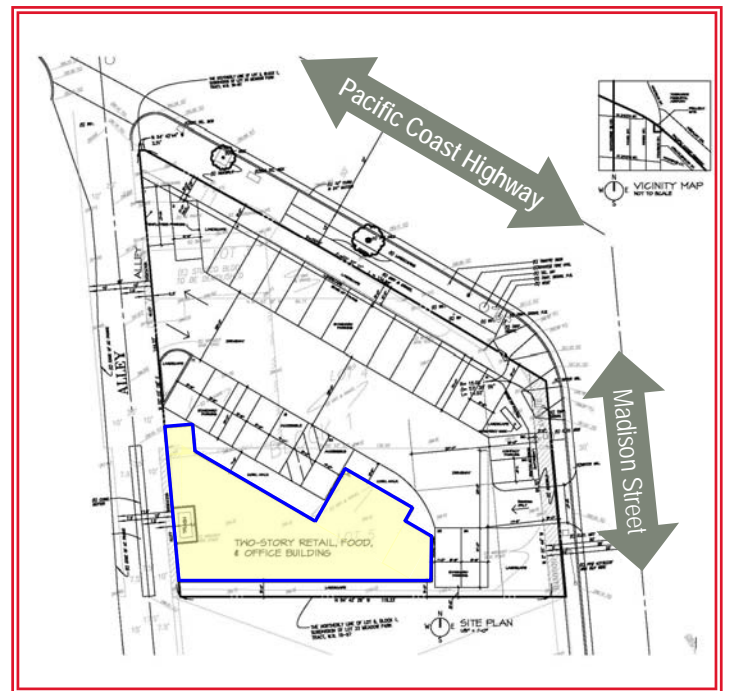
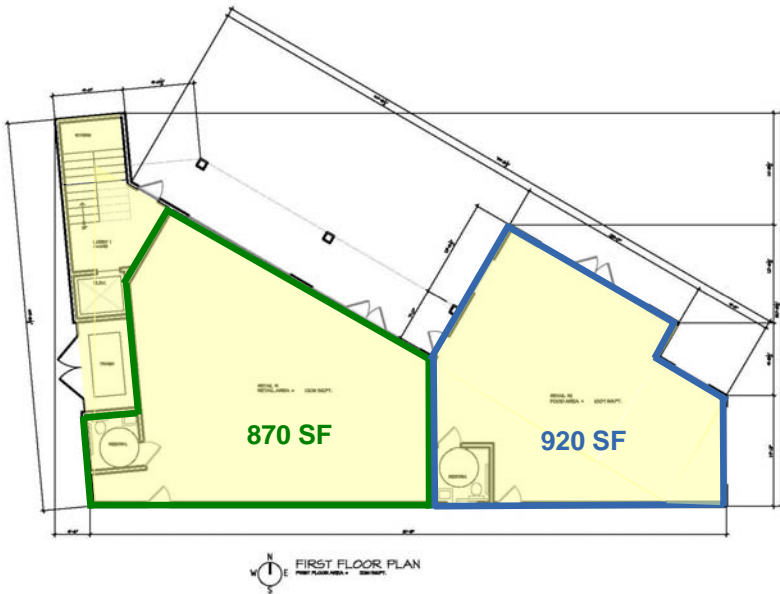
No warranty, express or implied, is made as to the accuracy of the information contained herein. This information is submitted subject to errors, omissions, change of price, rental or other conditions, withdrawal without notice, and to any special listing conditions imposed by our principals.

FOR LEASE

3614 PACIFIC COAST HIGHWAY, TORRANCE, CA 90505

DEMOGRAPHICS			
	1 mile	2 miles	3 miles
Population	13,659	78,221	190,213
Average Household Income	\$95,876	\$98,754	\$93,653

TRAFFIC COUNT	
Pacific Coast Highway	45,442 / day



Second Floor: 920± SF, 138± SF and 430± SF units

NAI Capital

970 West 190th Street ♦ Suite 100

Torrance, CA 90502 ♦ Fax: 310.327.6259

Broker ID 00806840

For Further Information, Contact:

Sheri Messerlian
 310.532.9080 ext 224
smesserlian@naicapital.com
 DRE License #00450571

No warranty, express or implied, is made as to the accuracy of the information contained herein. This information is submitted subject to errors, omissions, change of price, rental or other conditions, withdrawal without notice, and to any special listing conditions imposed by our principals.